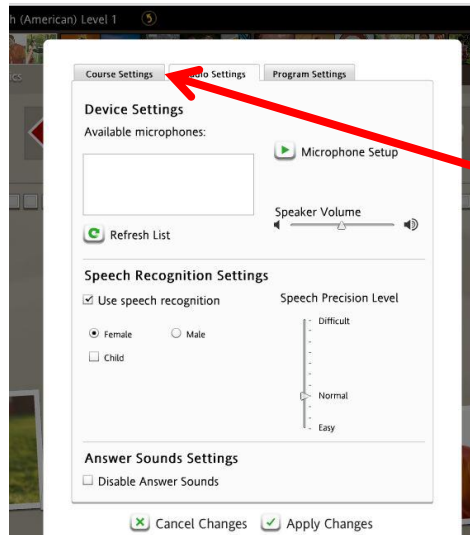
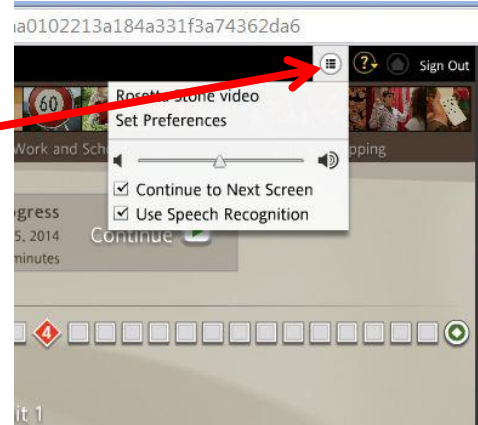
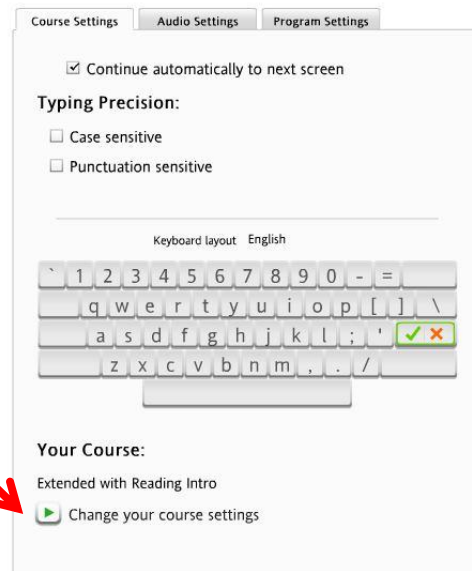


How To Change Course Settings Once A Patron Is In The Learning:

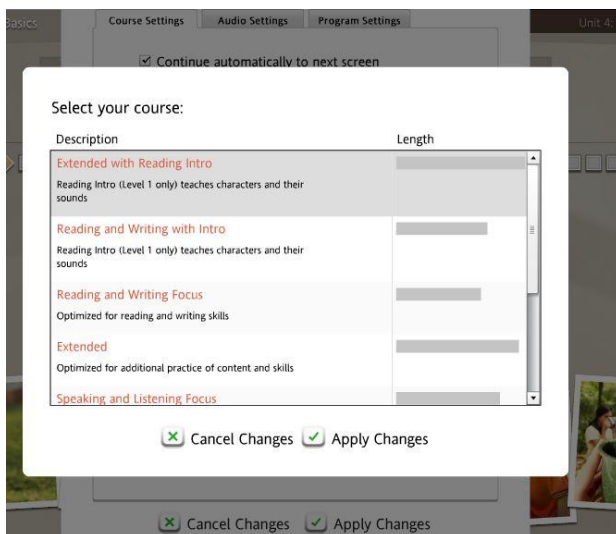
1. Once in the program, to change your course option you will click on the following drop down box and select 'Set Preferences'.



2. Next, the following menu will open as shown on the left. Select 'Course Settings', the top tab on the left.



3. Then select the 'Change your course settings' found under the bold 'Your Course:'



4. Lastly, select the course you desire. Happy learning!